

# Conference Model

Excluding Prems Division

3 Dec 2022



# Conference Model

- Change from 4 Regions to 3 Conferences
  - Names TBD
  - Nelson joins former Lower Region and Christchurch joins former Northern Region
- Conferences are managed by a Conference Chair and a Secretary/Treasurer
- Conference Chairs manage pre-season schedule (Feb 1– KBT)
- League Schedule managed by IHNZ and coordinated by Conference Chairs (post KBT – early Sept)
- League Ranking determine Nationals team

# Travel Expectations for 2023 (TBC) (Non-Premis)

Between June 15 and Aug 31

Christchurch teams will travel one/two weekend(s) to Auckland (potential reciprocating weekend for some teams)

Nelson teams will travel one/two weekend(s) to Wellington (potential reciprocating weekend for some teams)

New Plymouth teams will travel one weekend to Wellington, Levin or Whanganui (in addition to regular Hamilton travel)

Auckland teams will travel one weekend to Hamilton

Hamilton and Waihi team will travel one weekend to Auckland (in addition to regular New Plymouth/Hamilton travel)

\*Note: any significant travel further afield would be included if there are clubs that would like to visit another club outside of their conference and/ or not stated above.

Travel weekends will be coordinated so that all games against the local conference teams take place over one weekend

- Christchurch Lions go to Auckland and will play games against Panthers, Vipers and Stingrays
- Nelson Whalers travel to Wellington and play Renegades, Penguins, Lightning and maybe Ravens

# Pre-Season

- Runs Feb 1 to end of KBT
- Concept of the Pre-season is to just play hockey
  - High focus on training time and having fun
  - Teams can play games across age groups – up not down
  - Players can play multiple grades
  - Players don't have to choose between Inline and other sports
  - Clubs/Conference Committees can set up mini-tournaments and games
  - Concludes with King's Birthday weekend tournaments

# Season

- Runs post KBT to early Sept
- League Qualification for Junior Festival of Hockey and Nationals
  - Must be done under Sport NZ Balance is Better Rules
  - Played under IHNZ age grade and qualification rules
  - No tournaments during this time to allow for cross conference travel
    - Exception for Inter-Conferences and Mataraki
  - Non-Comp games may be scheduled during this time frame, but league games will take precedence

# Season Rules

16U, 18U, SW,  
Sen A and B,  
Masters

Top 2 Teams from each Conference Qualify for Nationals plus wild card teams as determined by IHNZ

(any wild card teams chosen based on win%\*)

Rankings based on win %

(Teams may not all play exact same number of games)

If conference teams are within .150 win% drop cross conference games and use conference win% to determine ranking

(13/17= .764 / 13/18=.722 / 14/19=.736)

If teams are tied within conference win% then use tie breaking rules as per IHNZ rule book.

For 16 and over any team that defaults or forfeits two or more games will not qualify for Nationals

# Season Rules: Call Ups

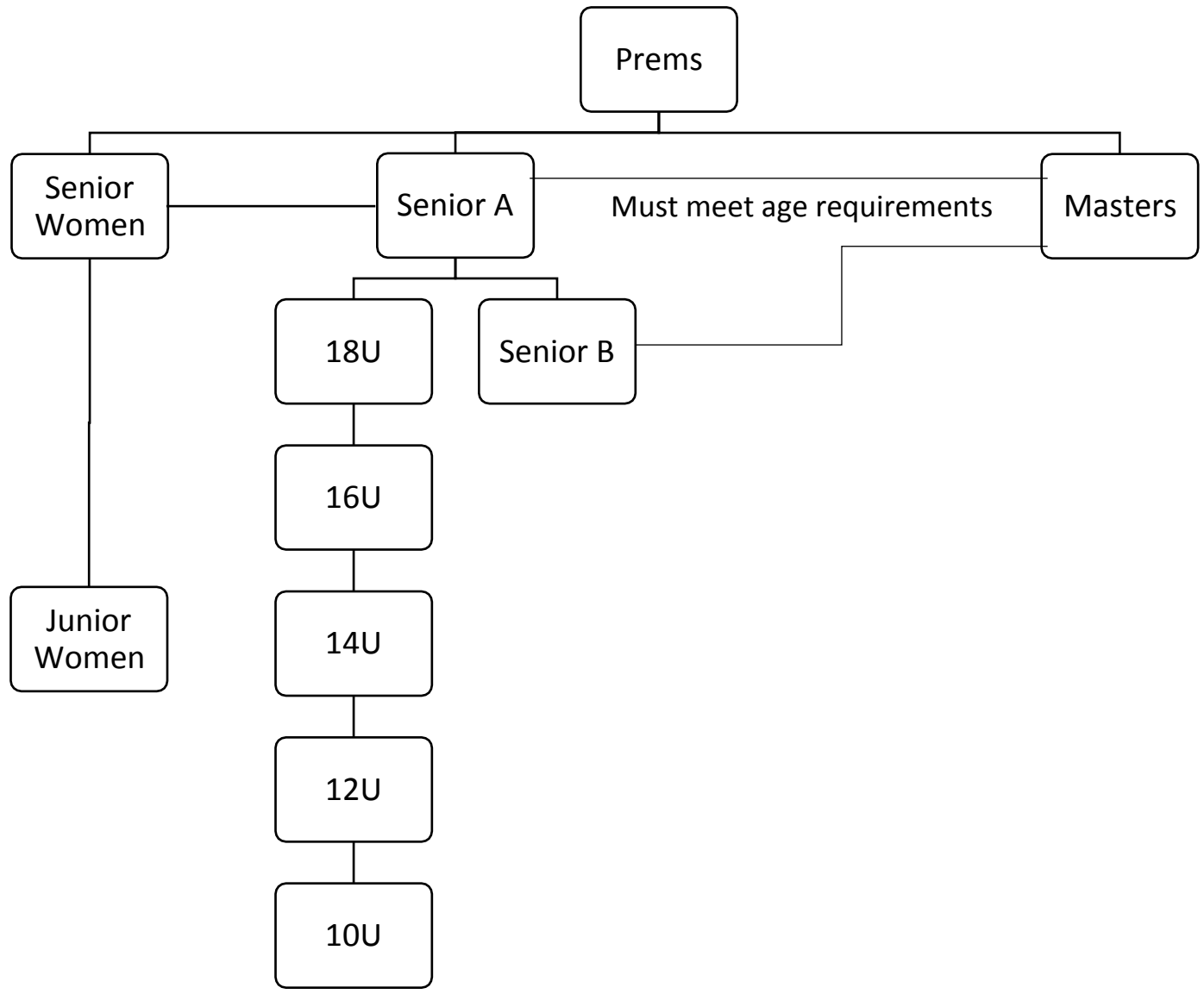
- During the Conference League, players may be called upon by the next grade up in their club to play in conference league games. This may be done throughout the conference league as required, however, will not be permitted at the National Club Championships. This may include:
  - (a) Premier grade may call up players from Senior A, Senior Women, Senior B, Masters or 18U.
  - (b) Senior A may call up players from Senior Women, Senior B, Masters or 18
  - (c) Masters may call up players from Senior Women and Senior B who meet the age requirement.
  - (d) 18U may call up players from 16U
  - (e) 16U may call up players from 14U etc.
- A player may be called up a maximum of four times during the Conference league competition, or over one competitive weekend that exceeds four games. A team utilising a player beyond the aforementioned will forfeit the game the player played in.
- In the case that 16U calls up players from 14U, those 14U players will not be permitted to play in both the Junior Festival of Hockey and the National Club Championships.
- Players are not permitted to play down grades

# Season Rules: Goalies

- Senior grade Goaltenders (16+) can play in two grades (as goaltenders only) with no more than a one grade dispersion
  - Premier and Senior A,
  - Senior A and Senior Women
  - 18U and 16U
- Goaltenders in all other grades may only play in one grade.
- Clubs are expected to coordinate/ organise goaltenders for their teams if they wish to enter teams.



# Grade Hierarchy



# 18 and Over Grades

- Greater than 48 (non-social\*) registrants must have a Prem team
- Between 36 and 47 registrants must have a Seniors A or Prem Team
- Between 24 and 35 registrants must have a Masters, Senior A or Prem team
- 23 or less registrants can register teams in any 18 and over age grade

\*Social players are only playing “fun” hockey and are not registered or eligible to participate in league play games.

# Example

	Club A	Club B	Club C	Club D
# (Non-Social) Registrants 18 and over	82	37	31	14
Prem	Min 1	Min 1 or Sen A	Min 1 or Sen A or Masters	Option
Senior A	Min 1	Min 1 or Prem	Min 1 or Prem or Master	Option
Masters	Option	Option	Min 1 or Prem or Sen A	Option
Senior B	Option x 1, 2 or 3	Option x 1 or 2	Option x 1 or 2	Option